

**OPEN**  
Monday - Saturday  
8:00 - 6:00

Valid April 17-27, 2024

## SPECIAL EVENTS

### Chick Day

April 20th  
12-2 PM

30+ varieties  
chicks, ducks,  
guineas!

### FISH DAY

Catfish, Bluegill, Bass, Crappie,  
Carp, Redears, & Minnows

Order by  
April 30, 2024

★★★★★  
Pickup  
May 4, 2024

## Limited Time

### ANNIVERSARY SPECIAL

1 troy oz  
silver  
collectible

**JUST \$29<sup>85</sup>**

Only 125  
available for a  
limited time!

**Silver Nixa Hardware  
Medallion Coin**

#1899

\*\*\* ECRWSS EDDM \*\*\*  
 Residential Customer  
 PRSRT STD  
 US POSTAGE PAID  
 SPRINGFIELD MO  
 PERMIT #96

# GIVEAWAYS

## ALL YEAR LONG!

**\$499**

VALUE

July

**\$399**

VALUE

December

**\$149**

VALUE

April

**\$149**

VALUE

September

**\$3,499**

VALUE

October

## Enter to Win!

### Sign Up In-Store

Follow us on Facebook  
for even more giveaways

STORE GIFT CARDS

EVERY MONTH!

**\$2,719**

VALUE

SEE PAGE 6  
FOR DETAILS

# Plants



Whitney, Lawn & Garden

4" Purple Pot Herbs

Reg. \$2.82

**\$2.32**



#699



Including mosquito plants, climbers, Gerbera daisies, begonias, purple fountain grass, etc.

5" Fancy Annuals

**\$5.84**

Reg. \$6.84

#119107



4" Perennials

**\$2.94**

Reg. \$3.42

#702



4" Garden Accents

**\$2.84**

Reg. \$3.42

#714

Including Vines & Spikes

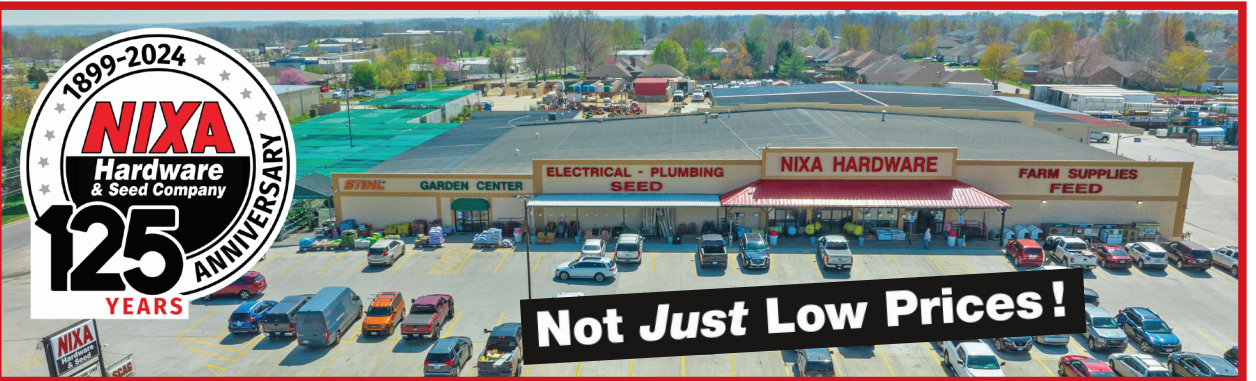


4" Seed Geranium

**\$1.84**

Reg. \$2.42

#114246



1899-2024  
**NIXA**  
Hardware & Seed Company  
**125**  
ANNIVERSARY  
YEARS

**Not Just Low Prices!**

**\$1.42**  
each

4-Pack Annual Flowers & Veggies

Reg. \$1.98 #704



4" Chef Jeff Vegetables



**\$2.32**  
each

Reg. \$2.84



4.5" Fancy Annuals

**\$3.84**

Over 100 flower varieties!

#7184 Reg. \$4.42

6" Cornerstone Foliage

Including cannas, elephant ears, Cordyline, etc.

#119183

Reg. \$9.84



**\$7.42**

Large Selection of Garden Seed!



**COUPON**

**FREE BOTTLE**

Root Stimulator and a Bag of Mushroom Compost with tree purchase (5 gallon pot or larger)

Limit one per customer

Show coupon image to save! Expires 4/27/24



**COUPON**

**HYDRANGEAS**

Including varieties of Proven Winner & Endless Summer

**20% OFF**



Show coupon image to save! Expires 4/27/24

**COUPON**

Including Knockout & Drift Roses

**20% OFF**

**ROSES**

Show coupon image to save! Expires 4/27/24



**COUPON**

**20% OFF**

All Pre-Potted Hanging Baskets!

Show coupon image to save! Expires 4/27/24



**COUPON**

4" to 5" Bonnie Veggies

**3 for \$12**

or \$4 each

#138918

Show coupon image to save! Expires 4/27/24



# Lawn Seed



Ian, Lawn & Garden



Straw Blanket  
8'x112'

**\$48.62**

Reg. \$54.86



#211398

Bales of  
Straw

**\$7.25**

per bale



#799

## GARDEN FEED



Cotton Burr  
Compost 2 cu ft

**\$8.84**

Reg. \$9.84  
#7073



Coarse  
Vermiculite  
4 cu ft

**\$37.84**

Reg. \$39.84  
#109428



FoxFarm Happy Frog  
All Purpose 6-4-5  
Fertilizer 4 lb

**\$11.84**

Reg. \$12.84  
#163400

## COUPON

Pelletized Lime 40 lb



**\$1.00  
OFF**

**\$5.84**

after coupon savings

#727.464

- One bag covers up to 1,000 sq ft
- Increases the pH in Acidic Soils
- Increases Fertilizer Efficiency

Show coupon image to save! Expires 4/27/24

## COUPON

Magnum 13-13-13



**\$2.00  
OFF**

**\$29.84**

after coupon savings

#1313

- For Gardens or Lawns
- Homogenized formulation for up to 90 day feed
- One 40 lb bag covers up to 4,200 sq ft

Show coupon image to save! Expires 4/27/24

## COUPON

Magnum Plus 16-20-5



**\$2.00  
OFF**

**\$34.84**

after coupon savings

#1620

- Professional Strength Homogenized formulation feeds lawns up to 90 days.
- 16 - 20 - 5 Formulation promotes growth, coloration, and root development for new or existing lawns
- One 40 lb bag covers up to 6,500 sq ft

Show coupon image to save! Expires 4/27/24

# Wholesale Seed Department - Fescues



Triple Play

**\$2<sup>38</sup>**  
lb

\$2.68/lb  
(less than 50 lb)

Blend of Die Hard,  
Emerald Green, &  
Escalade Varieties of  
Turf-Type Tall Fescue

#275

Die Hard

**\$2<sup>38</sup>**  
lb

\$2.68/lb  
(less than 50 lb)

Our foremost brand, selected  
over a 25-year period for  
best balance of color and  
drought resistance

#295

Emerald  
Green

**\$2<sup>38</sup>**  
lb

\$2.68/lb  
(less than 50 lb)

Highly recommended with  
our best blue-green color  
selection

#2192

Par 5

**\$2<sup>58</sup>**  
lb

\$2.78/lb  
(less than 50 lb)

A 5-Way mix selected for  
color, drought tolerance,  
faster emergence, and  
fine blades

#273

Shade  
Master II

**\$2<sup>74</sup>**  
lb

\$2.94/lb  
(less than 50 lb)

Simply the best shade mix  
available, deep rooted to  
better compete for water

#272

Ozarks Green

**\$2<sup>05</sup>**  
lb

\$2.25/lb  
(less than 50 lb)

A mix for many years of  
usage, containing KY-31  
Tall Fescue, Icon Perennial  
Ryegrass, Kentucky Bluegrass,  
& Annual Ryegrass

#271

Kentucky 31  
Tall Fescue

**\$1<sup>94</sup>**  
lb

\$2.14/lb  
(less than 50 lb)

By far the most widely adapted,  
hardest, most used variety  
through the US, with a highly  
productive cool season

#231

417-725-3512

www.nixahardware.com



# LANDSCAPING

## COUPON

Cedar Planters

**\$5.00 OFF**

2'x8' - \$91.00

4'x4' - \$73.00

4'x8' - \$113.00



\*Prices Shown After Coupon

Show coupon image to save! Expires 4/27/24

## COUPON

Hardwood Mulch 2 cu ft

**3 for \$10**



Show coupon image to save!  
Expires 4/27/24

#7728.646 / #817.677 / #1963560

Show coupon image to save! Expires 4/27/24

## COUPON

Top Soil 40 lb bags

**5 for \$10**



LIMIT 20 BAGS

Show coupon image to save! Expires 4/27/24

## BIG SELLERS with GREAT PRICES!



Miracle-Gro Potting Mix  
2 cu ft

**\$14.86**

Reg. \$17.86 #8000



Miracle-Gro Garden Soil  
1 cu ft

**\$5.84**

Reg. \$6.84 #7332



Fox Farm Ocean Forest Potting Soil  
1.5 cu ft

**\$17.84**

Reg. \$22.84 #163422

Vulcan 6 cu ft 2-Wheel Wheelbarrow



**\$118.86**

Reg. \$149.86 #4540241

Round Point Shovel



**\$9.84**

Reg. \$11.84 #125067

14 Tine Bow Rake



**\$8.86**

Reg. \$10.86 #70566

## Square Foot Garden Package

Includes ONE BAG of each:

- 2.2 Cu Ft Spagnum Peat Moss
- 4 Cu Ft Coarse Perlite
- 40 lb Composted Manure
- 40 lb Mushroom Compost
- 2 Cu Ft Cotton Burr Compost

Will cover approx. 12 sq ft 1' deep  
Will cover approx. 16 sq ft 9" deep

**10% SAVINGS!**

Reg. \$65 if purchased separately



Only **\$58.42** per package

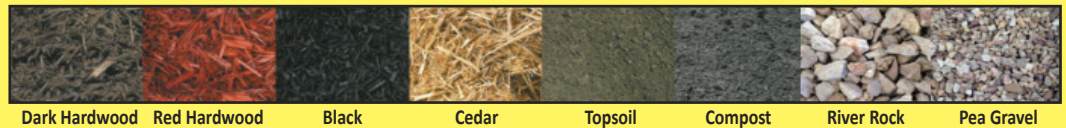


## COUPON All Bulk Mulch, Dirt & Rock

**\$5.00 OFF PER SCOOP**



Cedar #7524	Dark Hardwood #7521	Red Hardwood #7621	Black Mulch #7528	Top Soil #7107	Compost #7522	1-2" River Rock #7525	Pea Gravel #7523
\$33 <sup>00</sup>	\$33 <sup>00</sup>	\$33 <sup>00</sup>	\$33 <sup>00</sup>	\$33 <sup>77</sup>	\$33 <sup>77</sup>	\$39 <sup>76</sup>	\$39 <sup>76</sup>

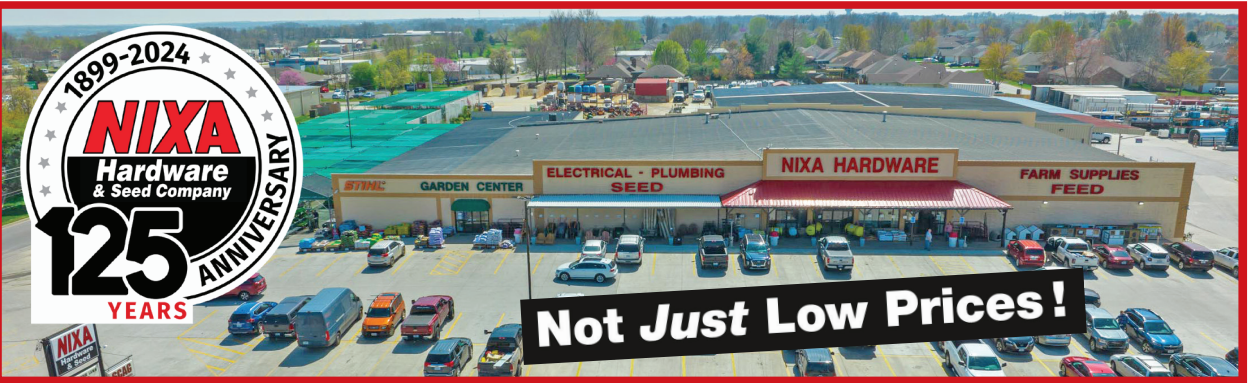


Prices Reflect \$5.00 Off Coupon Show coupon image to save!  
No Limit on scoops Expires 4/27/24

# Lawn Care



Andy, Lawn & Garden



# PEST CONTROL



BioAdvanced Complete Insect Killer 10 lb

**\$14.86**

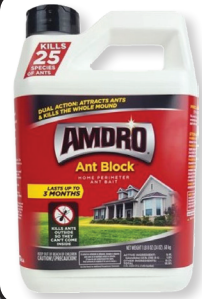
Reg. \$16.86 #6221



Ferti-Lome Weed-Out Liquid Concentrate 32 oz

**\$18.74**

Reg. \$21.84 #7299530



Amdro Ant Block Granules 24 oz

**\$14.84**

Reg. \$16.84 #3788643



Hi-Yield Killzall Super Concentrate 32 oz

**\$21.86**

Reg. \$26.86 #7298094



Spectracide Wasp & Hornet Killer 18.5 oz

**\$3.86**

Reg. \$5.42 #7018812



Viper Insect Killer Concentrate 16 oz

**\$38.74**

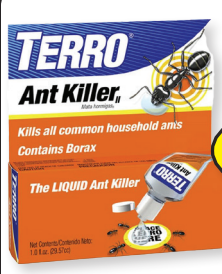
Reg. \$45.84 #2223.377



Season Long Grub Control Plus Turf Revitalizer 12 lb

**\$24.74**

Reg. \$28.74 #7318



Terro Liquid Ant Killer 1 oz

**\$2.42**

Reg. \$2.82 #70677



Victor Poison Moleworms 10 Ct

**\$12.84**

Reg. \$15.84 #7794845

## COUPON

**Hi-Yield Weed & Feed \$3.00 OFF**

- Post-Emergent Broadleaf Killer
- Controls dandelions, chickweed, henbit & more
- Each bag covers 5,000 sq ft

**\$16.84 after coupon savings**

Show coupon image to save! Expires 4/27/24

No bag limit!



#764

## COUPON

**Ferti-Lome All Seasons Crabgrass Killer \$5.00 OFF**

Covers 5,000 sq ft

**\$24.74 after coupon savings**

Show coupon image to save! Expires 4/27/24



#7319

# 5-Step Lawn Care Program

Save time and money while boosting your lawn's beauty!

This easy-to-follow package allows you to achieve a professional-looking lawn utilizing these top-grade products.

**\$148.74**

1 Package Covers 5,000 sq/ft



STEP 1 Spring Fertilizer

STEP 2 Insect Control

STEP 3 Crabgrass Control

STEP 4 Weed & Feed

STEP 5 Fall Fertilizer

INCLUDES: TWO Magnum Plus 16-20-5 Lawn Fertilizer 40lb bags / BioAdvanced Complete Insect Killer 10lb bag / For All Seasons II Lawn Food Plus Crabgrass & Weed Preventer 20lb bag / Weed Free Zone Plus Lawn Fertilizer 20lb bag

#5557

## COUPON

#5557

**5-Step Lawn Care Program \$5.00 OFF**

Basic or Premium



Show coupon image to save! Expires 4/27/24

# Mowers



Kelly, Small Engines



## IN-STORE GIVEAWAY

## SCAG WALKING MOWER

Every purchase of any new SCAG Zero-Turn Mower from Nixa Hardware & Seed through April 2024, counts toward an extra entry to win a SCAG SFC-30 Walk-Behind Mower

**\$2,000 VALUE!**

Winner selected May 2024



#166203

## TORO

Toro SmartStow 150CC Self-Propelled Gas Lawn Mower 22"

**\$488**



#7013911

Toro Smartstow 21" Electric Lawn Mower

**\$528**



#166633

Toro TimeCutter® Zero Turn Mower 42"

**\$3684**



#162328

## BAD BOY MOWERS

Bad Boy CX125 48" Magnum Briggs Zero Turn Mower

**\$4594**



#208750

Bad Boy Avenger KT740 Kohler 7000 60" Zero Turn Mower

**\$5274**

#157896



#208936

Bad Boy Maverick FS730 Kawasaki 54" Zero Turn Mower

**\$7884**



#166807

## SCAG POWER EQUIPMENT

SCAG FreedomZ 24HP SCAG-SR 48" Zero Turn Mower

**\$6184**



#167108

SCAG LibertyZ 27HP SCAG-SR 61" Zero Turn Mower

**\$6184**



#166945

SCAG SEVZ-52H 52" Electric Zero-Turn Mower

**\$5984**

**WE SERVICE WHAT WE SELL!**

Prices shown are **cash** prices! See our small engine department for card or financing options

# STIHL Equipment



Wes, Small Engines



## STIHL® BG 50 Blower

# \$149.99

- Highest power-to-weight ratio in the STIHL gas-powered line
- Purge pump primer enables easier starting without flooding
- Lightweight & compact design Fuel-efficient engine
- Upright fuel tank for easier filling
- Toolless air filter access



## STIHL®

MM 56 C-E Yard Boss  
Multi Tool Tiller

# \$429.99

- Purge pump primer for easy starting
- Folding handles and front grip for transport
- STIHL Easy2start eliminates need for strong starting cord pull
- Multi-function control handle for easy access



#MM56CE

## STIHL®

FS 38 Trimmer

# \$149.99

- Fully lined drive shaft
- Adjustable front handle
- Protected choke lever



#136500

## STIHL®

FSA 57 AK20  
Trimmer Set

# \$179.99

Reg. \$229.99

- Battery powered
- High-tech polymer
- Reduced emissions



#209310

**\$50.00 OFF**

## STIHL®

FS 56 RCE Trimmer

# \$199.99

Reg. \$229.99

- Simplified starting
- Easy clean air filter cover
- Made in the USA



#113230

**\$30.00 OFF**

## STIHL®

MS 170  
Gas Chainsaw

# \$199.99

- Compact and lightweight
- Anti-vibration system
- IntelliCarb Compensating Carburator



#8260.024

## STIHL®

HSA 26 Garden Shears

# \$149.99

- Rubber grip minimizes vibrations
- Double-sided blades for efficient work
- Onboard LED indicator to track battery life



#163779

## STIHL®

Cordless Pruning  
Saw GTA 26-SET

# \$179.99

- Powerful AS2 Battery Operation
- Battery and charger included
- 4in. bar with 1/4in. chain pitch
- Cuts logs up to 3in. dia. and provides easy handling



#157932

## STIHL®

MS 180 C-BE  
Gas Chainsaw

# \$279.99

- Lightweight and easy to maneuver
- Easy2Start system means a light pull on the cord will start engine



#8297.338

## STIHL®

MS 181 C-BE  
Gas Chainsaw

# \$319.99

- Quick Chain Adjuster makes chain tension adjustments easier
- Bumper spikes prevent pull-in for better control and cutting



#MS 181 C-BE

## STIHL®

SG 20  
BACKPACK  
SPRAYER

- Pressurized fluid reservoir
- Comfortable and lightweight
- Adjustable support harness distributes weight
- Working pressure of 40psi



# \$140.00

## STIHL®

RE 90 Plus Electric  
Pressure Washer

# \$199.99

- Includes adjustable flat-jet nozzle, rotary nozzle and detergent sprayer
- Integrated pressurized hose reel easily winds and unwinds the hose



#210493

## COUPON

FREE \$20  
Nixa Hardware  
Gift Card  
with any new  
**STIHL®**

Equipment  
Purchase over  
**\$249.00**

Valid on any 1 unit.  
Not valid on purchases  
of accessories/ oil etc.

Show Coupon image to save by  
4/27/24



# PET & WILD BIRD



*Josette, Sales Associate*

## DOG FOOD

**Valu-Pak  
Free 26/18  
Two Meat**  
**\$38.82**  
50 lb bag  
#160177



**Diamond  
Premium Adult**  
**\$32.86**  
40 lb bag  
#2525.886



**Diamond  
Naturals  
Lamb & Rice**  
**\$39.86**  
40 lb bag  
#8505711



## BIRD SEED

### COUPON



**Wild Bird Seed Mix  
40 lb**  
**\$16.84**  
after coupon  
**\$2.00 OFF**  
#2104

Show coupon image to save! Expires 4/27/24

### COUPON



**Black Oil  
Sunflower Seed  
40 lb**  
**\$18.86**  
after coupon  
**\$2.00 OFF**  
#2102

Show coupon image to save! Expires 4/27/24

### COUPON



**Safflower Seed 40 lb**  
**\$33.92**  
after coupon  
**\$5.00 OFF**  
#2106

Show coupon image to save! Expires 4/27/24

### COUPON



**Nyjer Thistle Seed 25 lb**  
**\$32.84**  
after coupon  
**\$5.00 OFF**  
#2107

Show coupon image to save! Expires 4/27/24

### COUPON



**Nut N' Berry  
Bird Food  
20 lb**  
**\$37.64**  
after coupon  
**\$5.00 OFF**  
#8300881

Show coupon image to save! Expires 4/27/24

### Pig Ear Treats



**2 for \$5**  
#2528



### 3' Natural Chew Sticks

**\$2.22**  
each  
REG. \$3.54  
Made from  
USDA Beef Rawhide  
#128646



**Mason Jar  
Hummingbird  
Nectar Feeder**  
32 oz  
**\$17.86**  
REG. \$19.86  
#9610718



**Hummingbird  
Sucrose Nectar  
Concentrate**  
64 oz  
**\$6.86**  
REG. \$8.86  
#8415580

## BEE SUPPLIES

### Grooved Top Bar Plasticell Coated Frames



**\$4.42**  
Reg. \$4.86



**\$4.42**  
Reg. \$4.76  
#108825 / #108824

**Deep Double Coated  
Yellow Plasticell**  
8-3/8" x 16-3/4"



**\$2.32**  
#207630 Reg. \$2.52

**Medium Double Coated  
Yellow Plasticell**  
5-1/2" x 16-3/4"



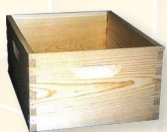
**\$1.98**  
#207629 Reg. \$2.32

**Shallow Double Coated  
Yellow Plasticell**  
4-3/4" x 16-3/4"



**\$1.64**  
#155229 Reg. \$1.74

### 10-Frame Deep 9-5/8" Brood Box



with Frames and  
Coated Plasticell,  
Assembled/  
Painted  
**\$87.86**  
Reg. \$92.86  
#165762



**\$26.84**  
Reg. \$28.84  
#145939  
with Frames and  
Coated Plasticell,  
Unassembled

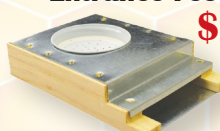


**Domed  
Smoker  
with Shield**  
4x7  
**\$29.84**  
Reg. \$33.42  
#155299



**All-Cotton  
Smoker  
Fuel**  
**\$5.76**  
Reg. \$6.76  
#2525.053

### Boardman Assembled Entrance Feeder



**\$5.86**  
#134115  
Reg. \$6.86



**Feeder  
Bucket**  
2 gal  
**\$8.86**  
Reg. \$10.86  
#155615



**Dadant Premium  
Bee Brush**  
**\$7.42**  
Reg. \$7.87  
#2519.070



**J-Hook Hive Tool**  
**\$12.74**  
Reg. \$13.74  
#147664



**Honey-B-  
Healthy**  
16 oz  
**\$29.86**  
Reg. \$33.86  
#113638



**SuperDFM  
Probiotic  
Supplement**  
10ct  
**\$19.86**  
Reg. \$24.86  
#166419



**Nosevit  
Plus**  
50 ml  
**\$28.74**  
Reg. \$31.42  
#133179



# Deer & Hunting



Craig, Service Counter



Redneck Blinds Predator Platinum 360° Blind 5'x6'  
**\$2999.86**  
 Redneck Blinds Buck Palace Platinum Blind 6'x6'  
**\$3399.86**  
 Redneck Blinds Big Country Platinum 360° Blind 6'x7'  
**\$3699.86**

**FREE WITH PURCHASE OF DEER BLIND**



**\$118.70 VALUE!**



# Summer Giant™ Annual Deer Mix

A High-Producing, Palatable Summer Forage.

Provides protein and nutrition that deer need during critical growing months.



This Legume-rich mix includes:  
 Soybeans, Cowpeas, Sunn Hemp, Buckwheat, Sunflower, Millet, & Grain Sorghum.

## PLANTING DATES:

Plant after a frost-free date (May 15)  
 Plant one 50# bag per acre in a prepared seed bed.

**\$74<sup>72</sup>**  
 50 lb bag  
 #2225



## SOYBEANS

Willcross Roundup Ready	<b>\$32.90</b>
50 lb bag	
Willcross Enlist E3	<b>\$56.88</b>
140,000 ct bag	
Eagle Roundup Ready Gamekeeper	<b>\$88.84</b>
Eagle Roundup Ready Big Fellow	<b>\$78.86</b>
50 lb bag	
Laredo Soybeans	<b>\$62.00</b>
50 lb bag	

Earthway Nylon Baged Seeder

**\$49.84**

Reg. \$56.84  
 #7697253



Boss Buck ATV Spreader 80 lb

**\$318.74**

Reg. \$348.74  
 #214788



**\$30 OFF**

3-Point Red Metal PTO Cone Spreader 775 lb

**\$628.86**

Reg. \$648.86  
 #2220.316



A Hybrid Sorghum Sudan Grass with Piper Parenting



Used best for hay, pasture or green chop

## PLANTING DATES:

May 15th - July 15th

Plant 50 lb/acre for Pasture/Crop and 70 lb for Hay

## BENEFITS

- Summer Annual - A Hybrid Sorghum Sudangrass with Low Prussic Acid (Piper Parenting)
  - Provides Quality Protein for Livestock During Stressful Summer
- Great Regrowth - Can Provide 2-3 Cuttings.
- Extremely Heat & Drought Tolerant
- Very Palatable; High Sugar Content
  - Very High Tonnage Producer



**78¢**  
 per lb

**\$39.00**

per acre at 50 lb

#225

## Food Plot Additives

Buckwheat



**\$1<sup>48</sup>**  
 lb

\$1.68/lb bulk  
 (less than 50 lb)

Sugar Beets



**\$5<sup>78</sup>**  
 lb

\$5.98/lb bulk  
 (less than 50 lb)

Peredovik Sunflower



**\$1<sup>08</sup>**  
 lb

\$1.28/lb bulk  
 (less than 50 lb)

Wild Game Grain Milo



**\$0<sup>96</sup>**  
 lb

\$1.26/lb bulk  
 (less than 50 lb)

Iron & Clay Cowpeas



**\$1<sup>22</sup>**  
 lb

\$1.42/lb bulk  
 (less than 50 lb)

Lab Lab



**\$3<sup>66</sup>**  
 lb

\$3.86/lb bulk  
 (less than 50 lb)

417-725-3512

www.nixahardware.com



# FEED & SUPPLIES



**Premium 12  
All-Stock Feed**

**\$10.42**

50 lb #2600 Reg. \$12.42



**Purina Equine  
Senior 14%**

**\$26.86**

50 lb #2015.389 Reg. \$29.86



**Whole  
Corn**

**\$8.42**

#158287  
50 lb Reg. \$10.42



**Purina Chicken  
Scratch Grains**

**\$16.86**

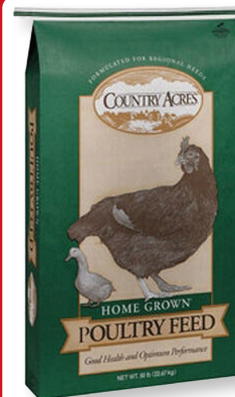
50 lb #2013 Reg. \$18.86



**Purina 16%  
Country Acres  
Layer Pellets**

**\$13.86**

50 lb #2015.644 Reg. \$16.86



**Purina 16%  
Country Acres  
Layer Crumbles**

**\$13.86**

50 lb #2222.138 Reg. \$16.86



**Crescent 14%  
Range Cubes**

**\$9.86**

50 lb #2227.133 Reg. \$11.86



**Crescent  
Cracked Corn**

**\$8.42**

50 lb #153611 Reg. \$10.42



**Beaver Creek  
Non-GMO  
Layer Mash**

**\$24.86**

50 lb #136640 Reg. \$26.86



**6'x8' Wood  
Corner Post**

**\$21.86**

Reg. \$24.86  
#2234.744



**6' T-Post**

**\$4.68**

#360



**6' T-Post**

**\$4.88**

#103887



**5' T-Post**

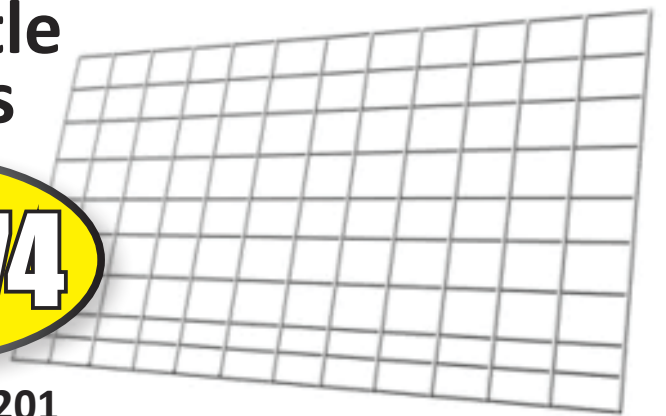
**\$4.58**

#122171

**16' Cattle  
Panels**

**\$25.74**

Reg. \$27.74 #2021.201



**Red Brand Barbed Wire 12.5 ga**

**\$117.42**  
per roll

Reg. \$119.42  
#2021.052

**\$109.42**  
per roll

**PALLET SPECIAL**  
(27 Rolls)



**HAY!**

Call for  
availability



- Alfalfa
- Grass Mix
- Brome
- Bermuda

**COUPON**

**\$.50 OFF  
PER BALE  
PINE SHAVINGS**  
*Premium, Medium or Mini*

Show coupon image to save! Expires 4/27/24



# Ag Supplies



Bob, Service Counter



## Best Way 25 Gallon Sprayer 1.0 GPM Pump



#149776

Reg. \$148.64

**\$134.74**

## Best Way 25 Gallon Sprayer 3.0 GPM Pump Deluxe Handle



#142315

Reg. \$268.84

**\$248.84**



## UTV Sprayer Pump & Boom 50 Gallon 5.0 GPM

#209767

Reg. \$949.86

**\$887.62**



## 200 Gallon 3-Point PTO Sprayer Deluxe Handgun, Boom Ext. Tips

Reg. \$3284.86

#141919

**\$2984.74**



Cornerstone  
41% Glyphosate  
2.5 Gallon

**\$43.74**

Reg. \$48.74  
#2300.056



Duracor  
1 Gallon

**\$92.84**

Reg. \$94.84  
#157899



Preference  
2.5 Gallon

**\$98.84**

Reg. \$108.84  
#131992



2, 4-D Amine  
1 Gallon

**\$19.74**

Reg. \$24.74  
#7700.543



Duracor  
2.5 Gallon

**\$229.74**

Reg. \$234.74  
#164404



Preference  
1 Gallon

**\$39.84**

Reg. \$44.84  
#2229.955



2, 4-D Amine  
2.5 Gallon

**\$43.74**

Reg. \$48.74  
#714.891



Remedy  
1 Gallon

**\$71.84**

Reg. \$74.84  
#2011.091



Remedy  
2.5 Gallon

**\$174.84**

Reg. \$179.84  
#110993



Ace 2 Gallon  
Pump Sprayer

**\$17.84**

Reg. \$21.84  
#7437668



Ortho Dial Sprayer Hose End

**\$13.86**

Reg. \$16.86

#74849

## 55 Gallon 3-Point PTO Sprayer Deluxe Handgun, Hamilton Tip

#141851



Reg. \$1529.86

**\$1388.74**

## 60 Gallon ATV Trailer Sprayer 5.0 GPM Pump Fold Out Boom

**\$1499.86**

Reg. \$1599.86



#209680

# Paint & Supplies



Jason, Paint/Merchandising



Kilz 2 All-Purpose Primer 1 gal

**\$23.86**

Reg. \$27.86 #17937



Klean Strip Paint Thinner 1 gal

**\$8.42**

Reg. \$11.42 #1438613



Rust-Oleum Epoxy Shield Anti-Skid Paint Additive 3.4 oz

**\$5.26**

#1438613



Muriatic Acid 1 gal

**\$4.86**

Reg. \$6.76 #12787



Kilz Original Spray Primer 13 oz

**\$6.42**

Reg. \$7.86 #12577



Alex Fast-Dry Paintable Caulk 10.1 oz

**\$2.96**

Reg. \$3.86 #1335348



GE Silicone Clear or White Caulk 10.1 oz

**\$5.86**

Reg. \$7.86 #10064 / #10065



Black Jack Driveway Sealer Drive-Maxx 200 5 gal

**\$16.86**

Reg. \$21.86 #1435452



Ready Seal Exterior Wood Stain 1 gal

**\$32.86**

Reg. \$37.86



Ready Seal 5 gallon Buckets

**\$168.86**

Reg. \$199.86



3-Piece Paint Roller Kit 9"

**\$2.86**

Reg. \$4.32 #10896



Ace Plastic Bucket 5 gal

**\$3.84**

Reg. \$5.84 #1147461

## Unbeatable Paint Deals!



Medallion Plus Interior Paint 1 gal

**\$39.86**

Reg. \$49.86



Medallion Plus Interior Paint Quarts

**\$19.86**

Reg. \$24.86



Accolade Interior Paint 1 gal

**\$44.86**

Reg. \$54.86



Accolade Interior Paint Quarts

**\$23.86**

Reg. \$28.86

## COUPON SPRAY PAINT



**BUY TWO**

get one



**FREE!**

Show coupon image to save!  
Expires 4/27/24